

# WHAT A FRIEND

(Solo for Bb T.C., B.C., or C Instrument)

WILLIAM HIMES (ASCAP)

With simplicity and warmth (♩ = 92 - ♩ = 60)  
(Bb Soloist)

*mp* legato

With simplicity and warmth (♩ = 92 - ♩ = 60)

*mp*

5

5

*p*

13

13

21 Slightly faster

21 Slightly faster

*f* *poco rit.*

29 *A tempo* *mp*

29 *A tempo* *mp*

35

35

First system of a musical score. It consists of a single treble clef staff at the top, which is mostly empty. Below it is a grand staff with a treble clef and a bass clef. The music begins with a series of chords in the right hand, followed by a melodic line that rises and then descends. A *cresc.* marking is placed under the right hand staff. The bass line consists of a few notes.

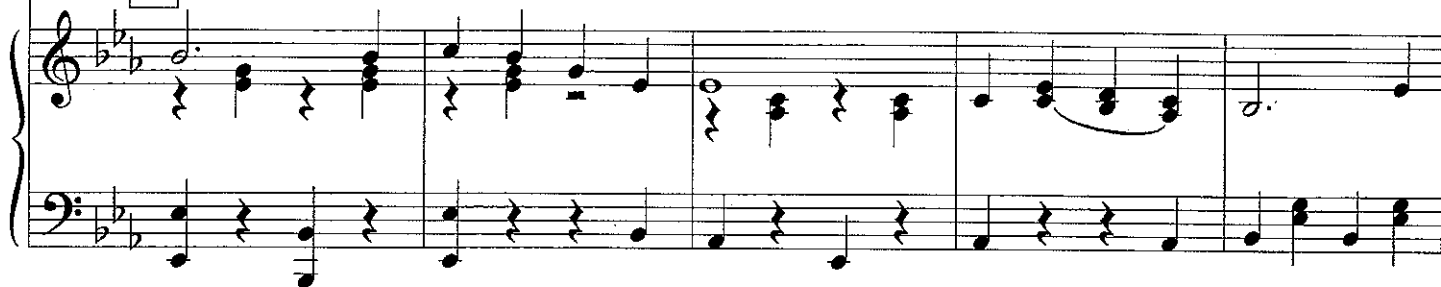
Second system of a musical score. The top staff is a single treble clef staff with a few notes. The grand staff below has a treble clef and a bass clef. A box containing the number "43" is positioned above the right hand staff. The right hand features a melodic line with a *mf* dynamic marking. The left hand has a series of chords with a *f* dynamic marking, which then transitions to *mf*. A *sim.* marking is present at the end of the system.

Third system of a musical score. The top staff is a single treble clef staff with a few notes. The grand staff below has a treble clef and a bass clef. The right hand has a melodic line with a *mf* dynamic marking. The left hand has a series of chords with a *f* dynamic marking, which then transitions to *mf*. A *sim.* marking is present at the end of the system.

51



51



59



59



67

*mf*

67

*mf legato*

75

75

*Gradually slower to the end*

*(Optional)*

*pp*

*pp*

*pp*

*ped.*

\*